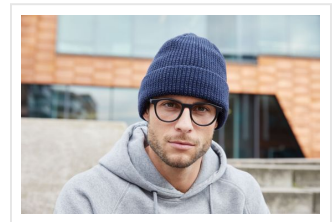
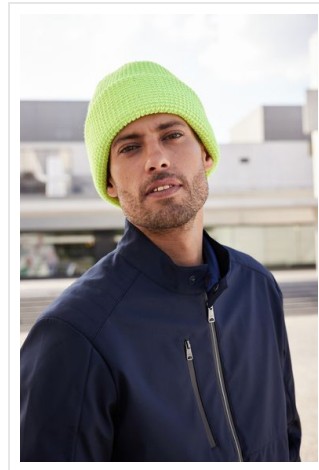
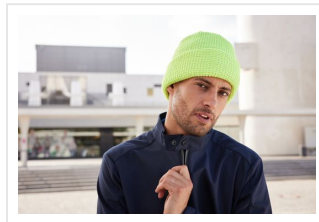




MB7142 Reflective Winter Beanie





- Warme, gebreide muts met reflecterende accenten.
- Klassiek ribdesign met brede omslag.
- Binnenkant gevoerd met fleece voor draagcomfort.
- Borduur de muts naar wens.



Beschikbare maten

1SIZE

Beschikbare kleuren

 bright orange (PMS: 805M) royal (PMS: 301) bright yellow (PMS: 809M) navy (PMS: 296) black (PMS: black)

Specificaties

Merk	Myrtle Beach
Categorie	Mutsen
Artikelcode	MB7142
Gewicht	100 gr
Materiaal	100% polyacryl
Aantal in binnenverpakking	12
Artikelen in omdoos	144
Land van herkomst	China
Mogelijke bewerkingen	Embroidery