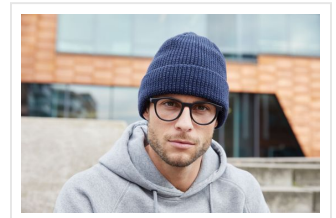
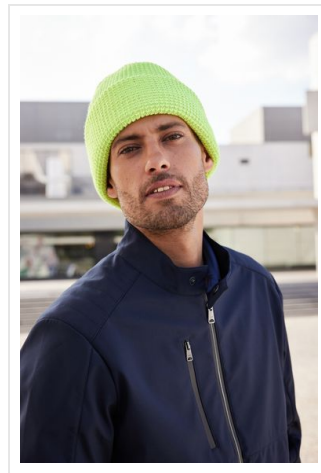
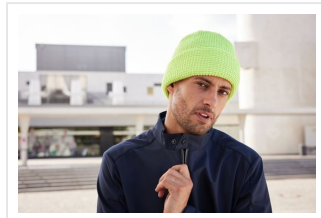


MB7142 Reflective Winter Beanie


- Warme, gebreide muts met reflecterende accenten.
- Klassiek ribdesign met brede omslag.
- Binnenkant gevoerd met fleece voor draagcomfort.
- Borduur de muts naar wens.




Beschikbare maten


1SIZE


Beschikbare kleuren

 bright orange (PMS: 805M)

 royal (PMS: 301)

 bright yellow (PMS: 809M)

 navy (PMS: 296)

 black (PMS: black)

Specificaties

Merk	Myrtle Beach
Categorie	Mutsen
Artikelcode	MB7142
Gewicht	100 gr
Materiaal	100% polyacryl
Aantal in binnenvpakking	12
Artikelen in omdoos	144
Land van herkomst	China
Mogelijke bewerkingen	Embroidery